

Array

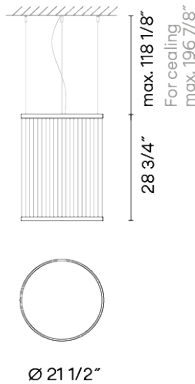
1815

VIBIA

Design By Umut Yamac

The hanging Array lamp includes a series of fine technical filaments pulled taut between two rings, where the light rises upwards creating a colour gradient. The cylindrical form and the intimate dimensions make it ideal for small spaces.

Spec sheet



undefined: undefined

Any modifications require a minimum order quantity and extra lead time

- Finish**
- 24 Beige M1
NCS S 2005-Y50R
 - 37 Terra Red
NCS S 4040-Y70R
 - 47 Green L1
NCS S 4005-G80Y

LED 2700 K

Dimming 0-10V

Installation type Remote Micro / Surface

LED CRI>90 3993 lm 121
2700 K

Driver Constant Voltage 90~305 V V 50~60
Hz HZ

 Dimmable  LED  IP20  Multi-volt 

Application Pendants

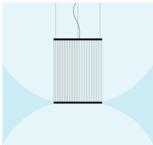
Packaging Box

Gross weight
Net weight

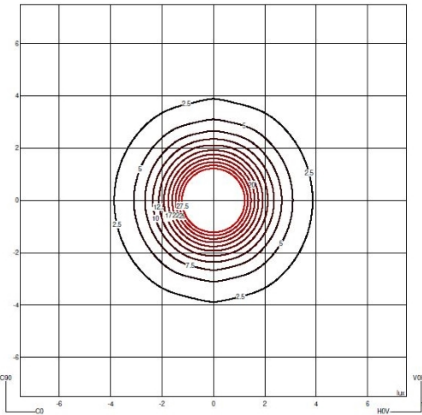
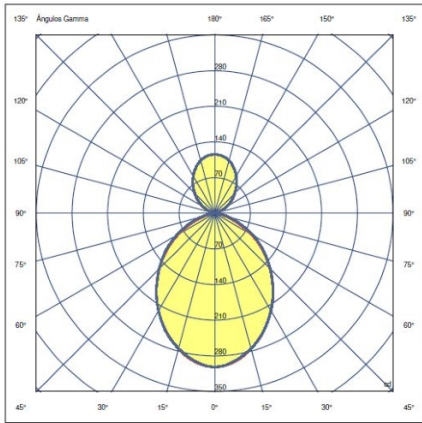
Lighting effect

Volumetric Diffuser

Subtly directed, diffused light that generates a soft hierarchy of light on to the illuminated surface



Photometric Data



Efficiency 26.935 lm/W
Coordination System CG
Total Flux 593 lm
Maximum Value 201.28 cd

All of our products come with a two year standard warranty. Check US & Canada Term and Condition sales@vibia.com

VIBIA, INC.

Office / Oficina
272 Fernwood Ave. Edison, NJ 08837. USA

International T 732 417 1700
Spain / Portugal T +34 934 796 970

sales@vibia.com
www.vibia.com/us/usa